

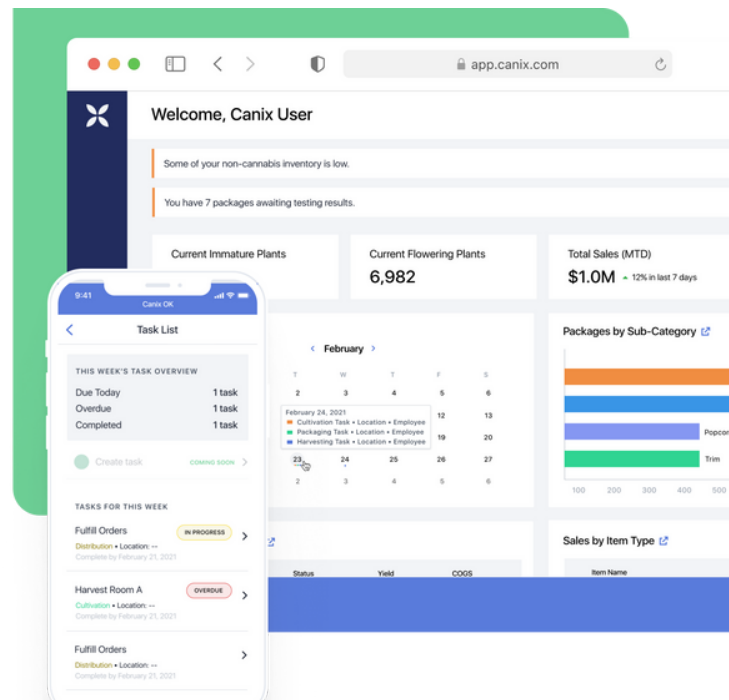
# canix

## Feature List

Take control of your business with Canix, the most trusted ERP software designed specifically for the cannabis industry. Canix helps cultivators, manufacturers and distributors stay ahead of the competition by reducing labor costs and improving operations. Don't let manual processes hold you back!

### Overview

- Real-time inventory management
- Purchase and sales orders management
- Compliance automation
  - Metrc, Biotrack, etc
- Production Planning
- Costing/COGS assignment
- Employee roles and user permissions
- Labor tracking & task management
- Leading technology:
  - Cloud-based web application
  - Mobile application w/ offline mode
  - Hardware and software integrations
  - POST & GET API access



### Cultivation

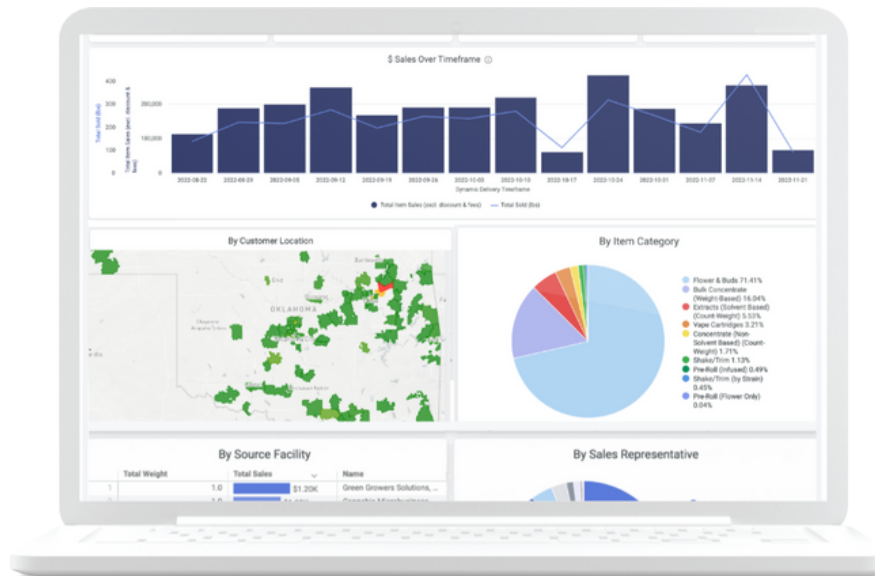
- Plant management, including growth stages & locations
- Advanced Metrc capabilities
  - Complete plant and package tag management
  - Full cycle reporting & bulk updates (immature, vegetative, flowering)
- Nursery management (clones and mothers)
- Harvests and yield reporting
- Post-harvest inventory management
- Waste and destruction (immatures, vegetative, flowering, harvest)
- Weight distribution at harvest
- Harvest workflows

## Manufacturing & Processing

- Manufacturing batch creation
- Production run tracking with intermediary steps
- Production batch records
- Package splitting & combining
- Bill of materials (BOMs) and recipes
- Cannabis and non-cannabis inventory management
- Yield and valuation reporting – by source, batch, strain, facility, etc
- Production and yield forecasting
- Lineage tracking including inputs, outputs, and test results
- Costing/COGS with financial integrations

## Sales & Distribution

- Real-time saleable inventory
- Sales order creation and fulfillment
- Auto-allocation
- Invoice creation and delivery
- Packing slips & pick lists
- Metrc transfer initiation
- Metrc manifest creation
- Live wholesale menus
- Outstanding balance tracker
- Prospective customer lists
- Sales reporting

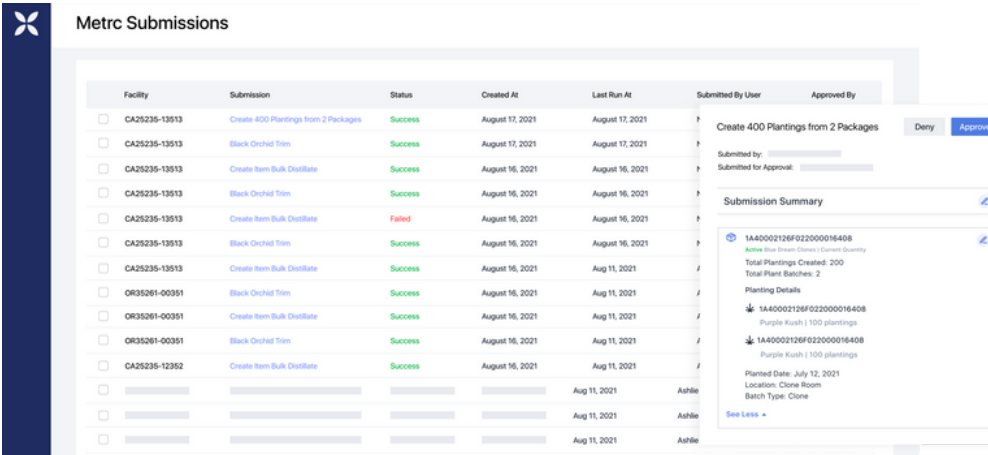


## Task Management

- SOPs and workflow assignments
- Labor cost assignment for COGS calculation
- Calendars, templates, & triggers based on events
- Productivity reports

## Compliance

- Metrc & Biotrack integrations with advanced workflows
- Automated sync for inventory and actions
- Plant and package identification/management
- Submission approval queue
- Offline/downtime queue
- Bulk actions
- 'Skip steps' to avoid tag burning
- Optical and RFID tag scanning capabilities (scanning on mobile)
- Lab test uploads – manual or automated via Confident Cannabis
- Lineage tracking and historical inventory reports



**Metrc Submissions**

Facility	Submission	Status	Created At	Last Run At	Submitted By User	Approved By
<input type="checkbox"/> CA25235-13513	Create 400 Plantings from 2 Packages	Success	August 17, 2021	August 17, 2021		
<input type="checkbox"/> CA25235-13513	Black Orchid Trim	Success	August 17, 2021	August 17, 2021		
<input type="checkbox"/> CA25235-13513	Create Item Bulk Distribute	Success	August 16, 2021	August 16, 2021		
<input type="checkbox"/> CA25235-13513	Black Orchid Trim	Success	August 16, 2021	August 16, 2021		
<input type="checkbox"/> CA25235-13513	Create Item Bulk Distribute	Failed	August 16, 2021	August 16, 2021		
<input type="checkbox"/> CA25235-13513	Black Orchid Trim	Success	August 16, 2021	August 16, 2021		
<input type="checkbox"/> CA25235-13513	Create Item Bulk Distribute	Success	August 16, 2021	Aug 11, 2021		
<input type="checkbox"/> OR35261-00351	Black Orchid Trim	Success	August 16, 2021	Aug 11, 2021		
<input type="checkbox"/> OR35261-00351	Create Item Bulk Distribute	Success	August 16, 2021	Aug 11, 2021		
<input type="checkbox"/> OR35261-00351	Black Orchid Trim	Success	August 16, 2021	Aug 11, 2021		
<input type="checkbox"/> CA25235-12352	Create Item Bulk Distribute	Success	August 16, 2021	Aug 11, 2021		
<input type="checkbox"/>				Aug 11, 2021	Ashlie	
<input type="checkbox"/>				Aug 11, 2021	Ashlie	
<input type="checkbox"/>				Aug 11, 2021	Ashlie	

**Create 400 Plantings from 2 Packages** [Deny] [Approve]

Submitted by: \_\_\_\_\_  
Submitted for Approval: \_\_\_\_\_

**Submission Summary**

1A40002126F022000016408  
Aster Blue Trunk Strain (Current Quantity)  
Total Plantings Created: 200  
Total Plant Batches: 2

**Planting Details**

- 1A40002126F022000016408  
Purple Kush | 100 plantings
- 1A40002126F022000016408  
Purple Kush | 100 plantings

Planted Date: July 12, 2021  
Location: Clone Room  
Batch Type: Clone

[See Less](#)

## Finance

- Costing/COGS tracking, including direct labor
- GL and sub-ledger accounting integrations
- Financial reporting:
  - Accounts payable/receivable
  - Harvest profitability – profit per stain/harvest
  - Forecasting: locations, harvest data, and nursery output
  - Inventory valuation and 'look back' reporting
  - Tax calculations (excise & cultivation)
  - Production costs

## Reporting

- OOTB reports: inventory, yields, production, sales, bucking, etc
- Configurable BI-reporting via Looker plug-in
- Saved reports, CSV exports, and automated delivery
- Multi-license/entity reporting roll-up
- Forecasting and production planning

## Hardware Integrations

- Label printers: dynamic label design, generation, and printing
- Optical & RFID scanners: plant movements, cycle counting
- Wayfast Bluetooth/RFID scales: automated weight captures
- Hardware connectivity with Outlaw, StashStock, and more

## Software Integrations

- Metrc
- BioTrack
- Dutchie
- QuickBooks Online
- QuickBooks Desktop
- Sage Intacct
- Confident Cannabis
- Growlink
- Leaflink
- Leaf Trade
- Onfleet
- Wayfast
- Green Check Verified
- Lendica

